



# Gate Hardware Catalog

Hinges



Gorilla Hinges



Accessories



Wheels & Covers



Guide Rollers



*It's what's inside that makes the difference.*

# *Our Hinge. Their Gate. Your Reputation.*

**Guardian Hinges = Superior Performance + Increased Customer Satisfaction**

More and more installers are using Guardian Hinges for their gate systems, because they know a gate's performance is only as good as the hinge it rides on. Guardian Hinges are engineered to bear more weight, move more freely and last longer than barrel, ball bearing, or other types of hinges.

That's just the beginning of the advantages Guardian Hinges offers you. Our quiet, friction-free hinges are also easy to install and mount. Plus, we offer a number of choices for material, finishes and styles.

Guardian Hinges are superior in every way, and to prove that we back them with a limited lifetime warranty.

Do as so many installers, architects and buyers around the world are doing. Insist on Guardian Hinges. Your customers will thank you.

## **Strongest**

Weight capacity up to 3,000 lbs. per pair

Five times the weight-bearing surface of the next comparable barrel hinge

Largest weld surface in the industry

## **Most Durable**

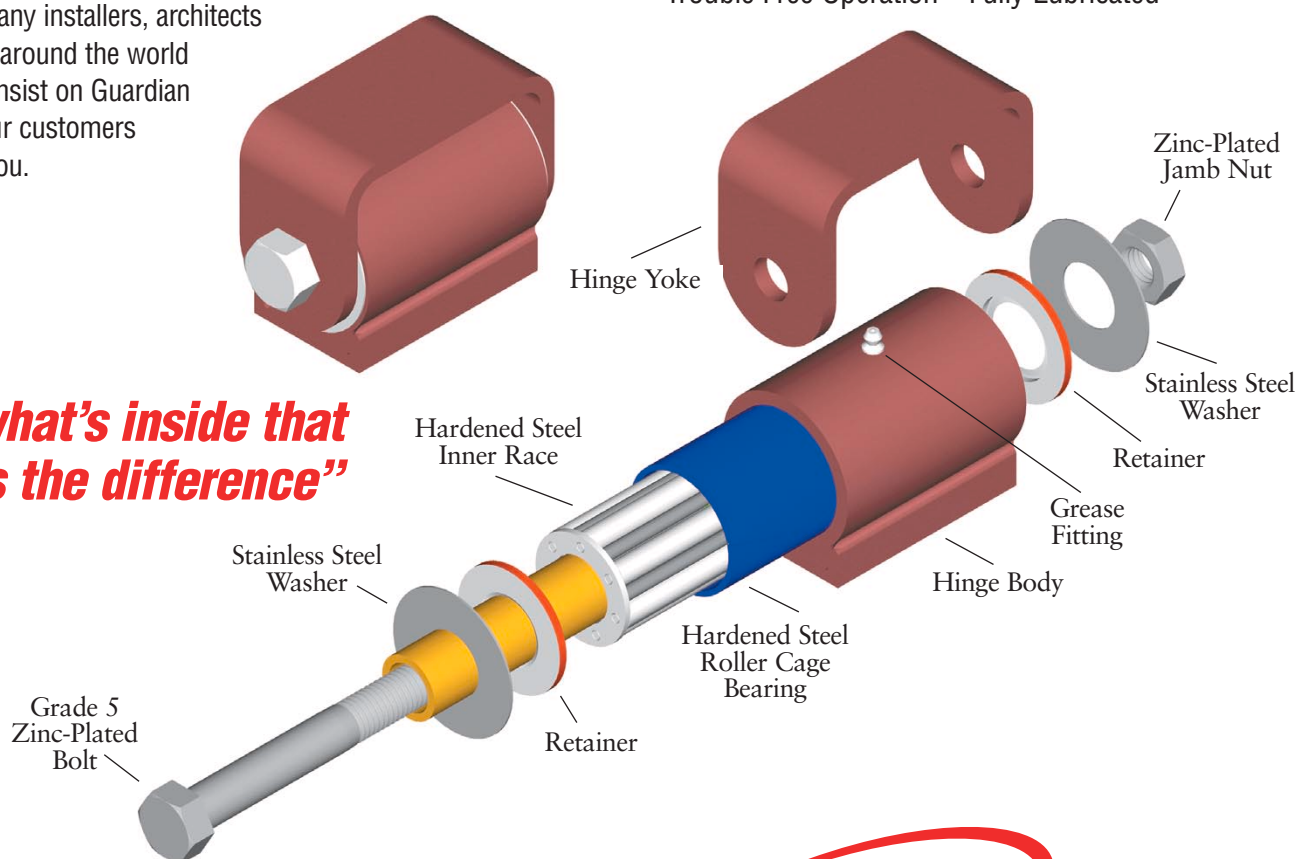
Heavy Duty Construction Designed for Maximum Durability

Dependable Roller Bearing Design

Even Weight Distribution

Trouble Free Operation—Fully Lubricated

***"It's what's inside that makes the difference"***

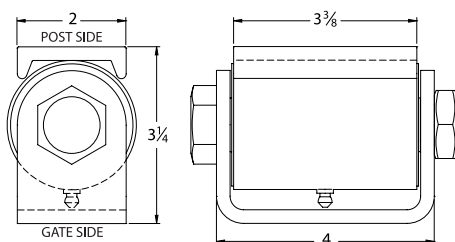


***Best warranty in the industry!***



Copyright © 2011 Guardian Gate Hardware

**Note:** The rated weight for Guardian Hinges is based on the hinge design, manufacturing methods and materials used. To achieve rated weight it is necessary to employ standard and acceptable welding practices to attach and/or if bolting using Grade 5 or better bolts.



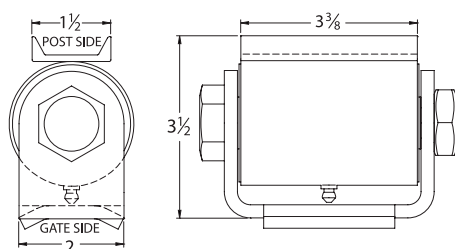
## Flat Mount – Both Sides

**2000.100** GUARDIAN Heavy Duty Hinge, Prime Coated

**2000.150** GUARDIAN Heavy Duty Hinge, Unfinished

**2000.200** GUARDIAN Heavy Duty Hinge, Galvanized

Rated to 3000 pounds (1361 kgs) per pair



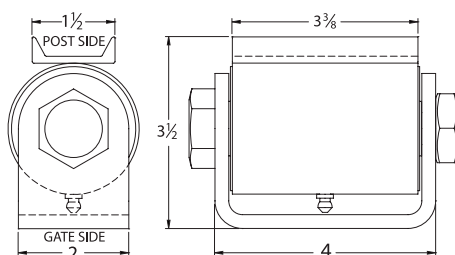
## Round Mount – Both Sides

**2010.100** GUARDIAN Heavy Duty Hinge, Prime Coated

**2010.150** GUARDIAN Heavy Duty Hinge, Unfinished

**2010.200** GUARDIAN Heavy Duty Hinge, Galvanized

Rated to 3000 pounds (1361 kgs) per pair



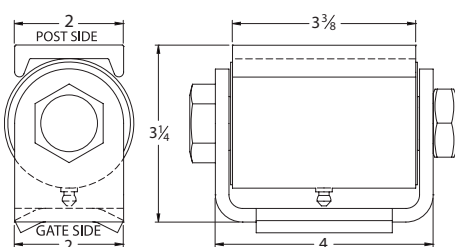
## Flat Mount to Gate – Round Mount to Post

**2015.100** GUARDIAN Heavy Duty Hinge, Prime Coated

**2015.150** GUARDIAN Heavy Duty Hinge, Unfinished

**2015.200** GUARDIAN Heavy Duty Hinge, Galvanized

Rated to 3000 pounds (1361 kgs) per pair



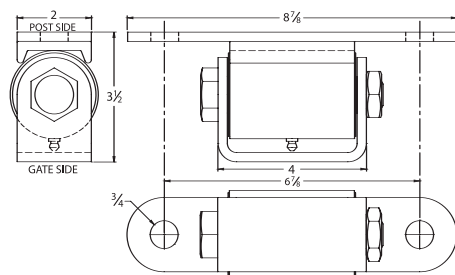
## Round Mount to Gate – Flat Mount to Post

**2020.100** GUARDIAN Heavy Duty Hinge, Prime Coated

**2020.150** GUARDIAN Heavy Duty Hinge, Unfinished

**2020.200** GUARDIAN Heavy Duty Hinge, Galvanized

Rated to 3000 pounds (1361 kgs) per pair



## Flat Mount to Gate – Bolt to Post

**2025.100** GUARDIAN Heavy Duty Hinge, Prime Coated

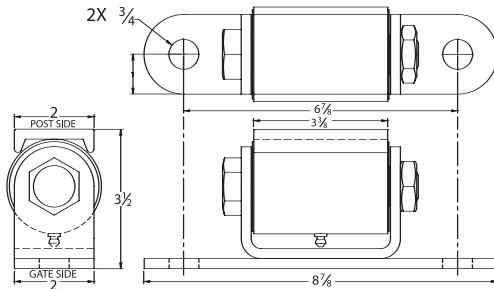
**2025.150** GUARDIAN Heavy Duty Hinge, Unfinished

**2025.200** GUARDIAN Heavy Duty Hinge, Galvanized

Rated to 3000 pounds (1361 kgs) per pair



# Guardian HEAVY DUTY Hinges



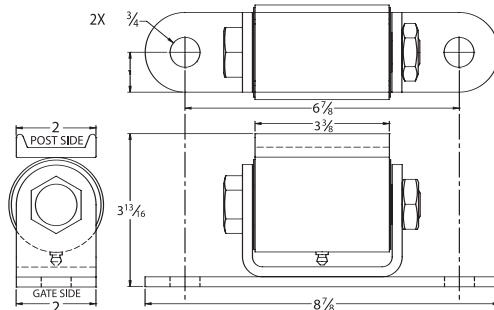
## Bolt to Gate – Flat Mount to Post

**2030.100** GUARDIAN Heavy Duty Hinge, Prime Coated

**2030.150** GUARDIAN Heavy Duty Hinge, Unfinished

**2030.200** GUARDIAN Heavy Duty Hinge, Galvanized

Rated to 3000 pounds (1361 kgs) per pair



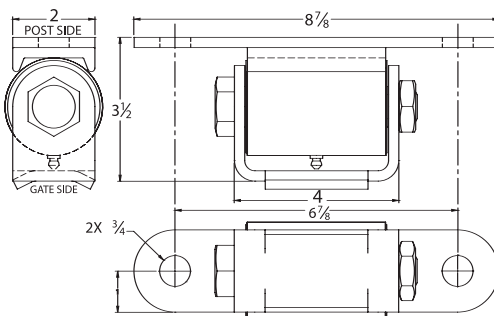
## Bolt to Gate – Round Mount to Post

**2035.100** GUARDIAN Heavy Duty Hinge, Prime Coated

**2035.150** GUARDIAN Heavy Duty Hinge, Unfinished

**2035.200** GUARDIAN Heavy Duty Hinge, Galvanized

Rated to 3000 pounds (1361 kgs) per pair



## Round Mount to Gate – Bolt to Post

**2040.100** GUARDIAN Heavy Duty Hinge, Prime Coated

**2040.150** GUARDIAN Heavy Duty Hinge, Unfinished

**2040.200** GUARDIAN Heavy Duty Hinge, Galvanized

Rated to 3000 pounds (1361 kgs) per pair

## Bolt to Gate – Bolt to Post

**2050.100** GUARDIAN Heavy Duty Hinge, Prime Coated

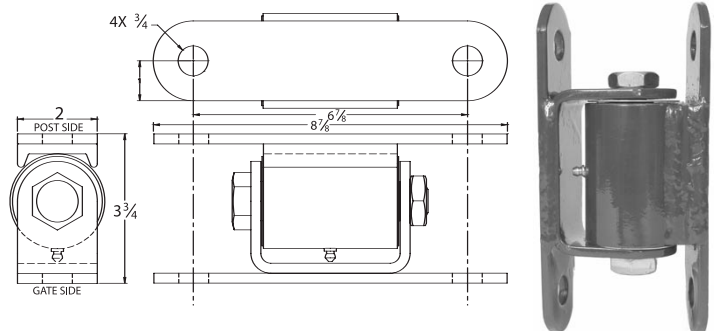
**2050.150** GUARDIAN Heavy Duty Hinge, Unfinished

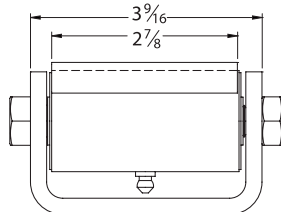
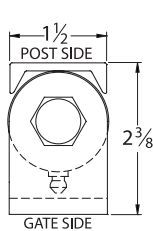
**2050.200** GUARDIAN Heavy Duty Hinge, Galvanized

**2050.250** GUARDIAN Heavy Duty Hinge, Zinc Plated

**2050.300** GUARDIAN Heavy Duty Hinge, Powder Coated – Black

Rated to 3000 pounds (1361 kgs) per pair





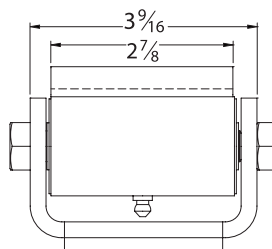
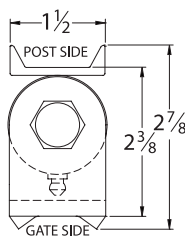
## Flat Mount – Both Sides

**2100.100** GUARDIAN Standard Hinge, Prime Coated

**2100.150** GUARDIAN Standard Hinge, Unfinished

**2100.200** GUARDIAN Standard Hinge, Galvanized

Rated to 1000 pounds (454 kgs) per pair



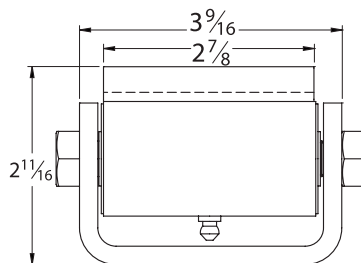
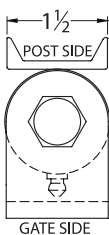
## Round Mount – Both Sides

**2110.100** GUARDIAN Standard Hinge, Prime Coated

**2110.150** GUARDIAN Standard Hinge, Unfinished

**2110.200** GUARDIAN Standard Hinge, Galvanized

Rated to 1000 pounds (454 kgs) per pair



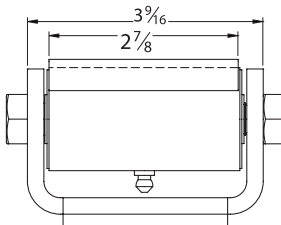
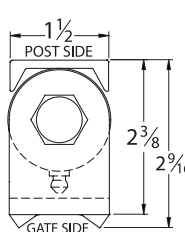
## Flat Mount to Gate – Round Mount to Post

**2115.100** GUARDIAN Standard Hinge, Prime Coated

**2115.150** GUARDIAN Standard Hinge, Unfinished

**2115.200** GUARDIAN Standard Hinge, Galvanized

Rated to 1000 pounds (454 kgs) per pair



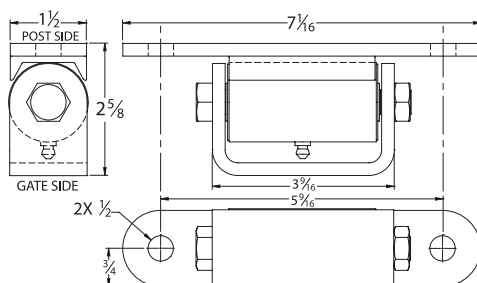
## Round Mount to Gate – Flat Mount to Post

**2120.100** GUARDIAN Standard Hinge, Prime Coated

**2120.150** GUARDIAN Standard Hinge, Unfinished

**2120.200** GUARDIAN Standard Hinge, Galvanized

Rated to 1000 pounds (454 kgs) per pair



## Flat Mount to Gate – Bolt to Post

**2125.100** GUARDIAN Standard Hinge, Prime Coated

**2125.150** GUARDIAN Standard Hinge, Unfinished

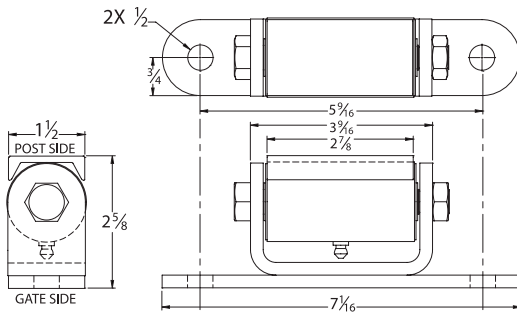
**2125.200** GUARDIAN Standard Hinge, Galvanized

Rated to 1000 pounds (454 kgs) per pair





# Guardian STANDARD Hinges



## Bolt to Gate – Flat Mount to Post

**2130.100** GUARDIAN Standard Hinge, Prime Coated

**2130.150** GUARDIAN Standard Hinge, Unfinished

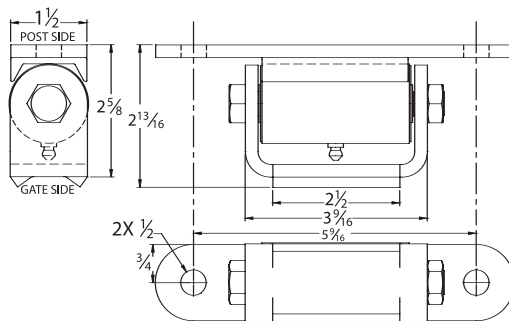
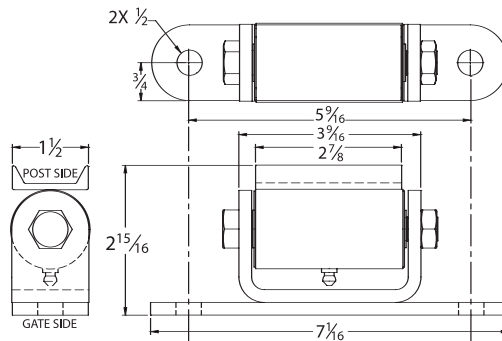
**2130.200** GUARDIAN Standard Hinge, Galvanized  
Rated to 1000 pounds (454 kgs) per pair

## Bolt to Gate – Round Mount to Post

**2135.100** GUARDIAN Standard Hinge, Prime Coated

**2135.150** GUARDIAN Standard Hinge, Unfinished

**2135.200** GUARDIAN Standard Hinge, Galvanized  
Rated to 1000 pounds (454 kgs) per pair



## Round Mount to Gate – Bolt to Post

**2140.100** GUARDIAN Standard Hinge, Prime Coated

**2140.150** GUARDIAN Standard Hinge, Unfinished

**2140.200** GUARDIAN Standard Hinge, Galvanized  
Rated to 1000 pounds (454 kgs) per pair

## Bolt to Gate – Bolt to Post

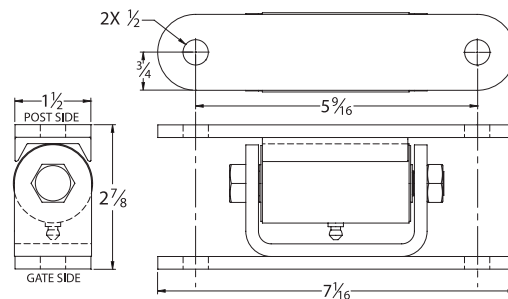
**2150.100** GUARDIAN Standard Hinge, Prime Coated

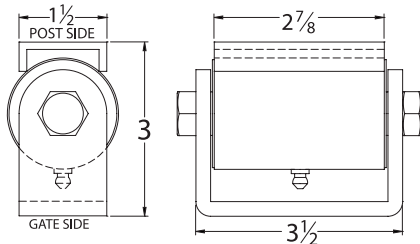
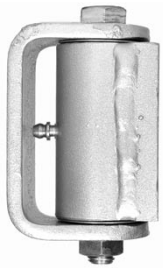
**2150.150** GUARDIAN Standard Hinge, Unfinished

**2150.200** GUARDIAN Standard Hinge, Galvanized

**2150.250** GUARDIAN Standard Hinge, Zinc Plated

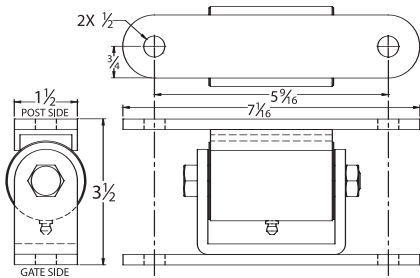
**2150.300** GUARDIAN Standard Hinge, Powder Coated – Black  
Rated to 1000 pounds (454 kgs) per pair





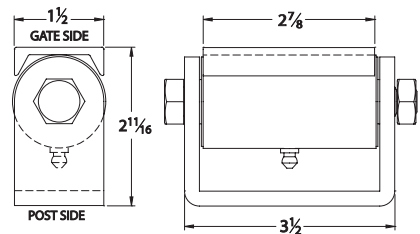
## Flat Mount – Both Sides

**2165.100** GUARDIAN Standard Hinge, Aluminum  
Rated to 600 pounds (272 kgs) per pair



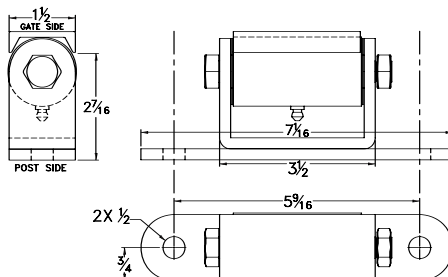
## Bolt to Gate – Bolt to Post

**2168.100** GUARDIAN Standard Hinge, Aluminum  
Rated to 600 pounds (272 kgs) per pair



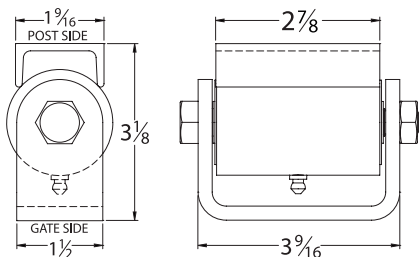
## Aluminum – Flat Mount to Gate – Steel – Flat Mount to Post

**2170.100** GUARDIAN Standard Hinge, Aluminum/Steel  
Rated to 600 pounds (272 kgs) per pair



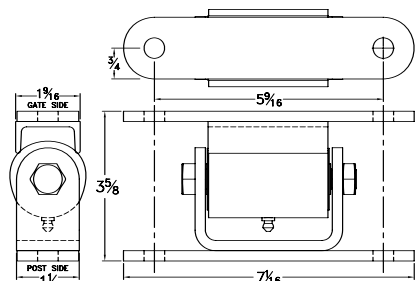
## Aluminum – Flat Mount to Gate – Steel – Bolt to Post

**2173.100** GUARDIAN Standard Hinge, Aluminum/Steel  
Rated to 600 pounds (272 kgs) per pair



## Flat Mount – Both Sides

**2180.100** GUARDIAN Standard Hinge, Stainless Steel  
Rated to 1,000 pounds (454 kgs) per pair



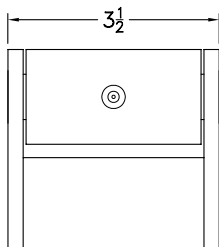
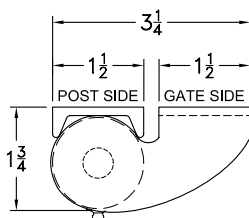
## Bolt to Gate – Bolt to Post

**2185.100** GUARDIAN Standard Hinge, Stainless Steel  
Rated to 1,000 pounds (454 kgs) per pair



# Guardian GORILLA Hinges

**NEW Product!**



## GORILLA Flat Mount – Both Sides

**2060.100** GORILLA Heavy Duty Hinge, Prime Coated

**2060.150** GORILLA Heavy Duty Hinge, Unfinished

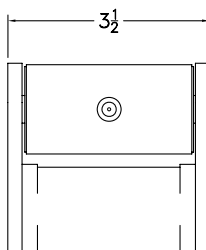
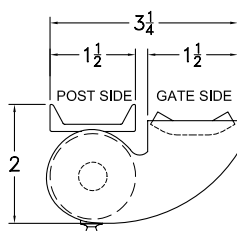
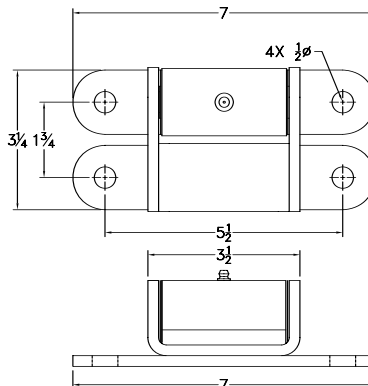
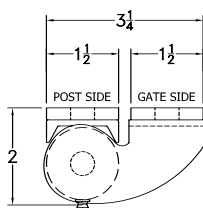
**2060.200** GORILLA Heavy Duty Hinge, Galvanized  
Rated to 1000 pounds (454 kgs) per pair

## GORILLA Bolt to Gate – Bolt to Post

**2062.100** GORILLA Heavy Duty Hinge, Prime Coated

**2062.150** GORILLA Heavy Duty Hinge, Unfinished

Rated to 1000 pounds (454 kgs) per pair



## GORILLA Round Mount – Both Sides

**2064.100** GORILLA Heavy Duty Hinge, Prime Coated

**2064.150** GORILLA Heavy Duty Hinge, Unfinished

**2064.200** GORILLA Heavy Duty Hinge, Galvanized  
Rated to 1000 pounds (454kgs) per pair

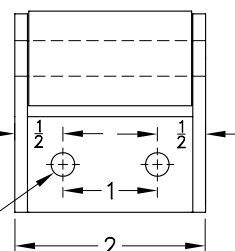
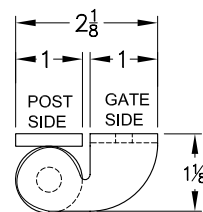
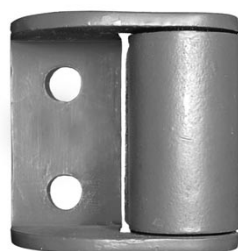
**NEW Product!**

## GORILLA JR Flat Mount – Both Sides

**2070.100** GORILLA JR Hinge, Prime Coated

**2070.150** GORILLA JR Hinge, Unfinished

Rated to 250 pounds (114 kgs) per pair

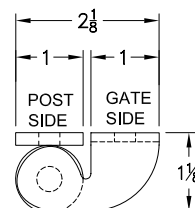
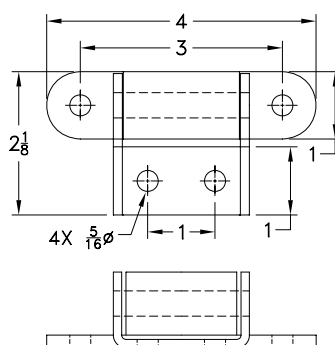


## GORILLA JR Bolt to Gate – Bolt to Post

**2072.100** GORILLA JR Hinge, Prime Coated

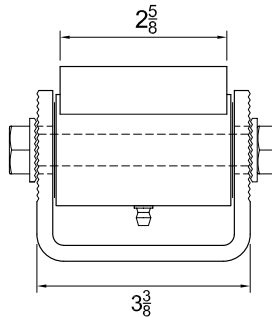
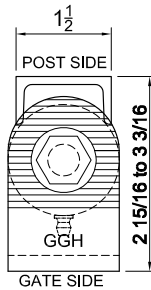
**2072.150** GORILLA JR Hinge, Unfinished

Rated to 250 pounds (114 kgs) per pair





**NEW Product!**

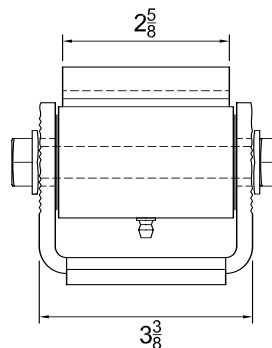
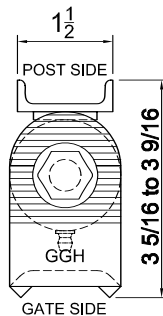


## Flat Mount – Both Sides

**3100.100** Adjustable Standard Hinge, Prime Coated

**3100.150** Adjustable Standard Hinge, Unfinished

**3100.200** Adjustable Standard Hinge, Galvanized  
Rated for 1000 pounds (454 kgs) per pair



## Round Mount – Both Sides

**3110.100** Adjustable Standard Hinge, Prime Coated

**3110.150** Adjustable Standard Hinge, Unfinished

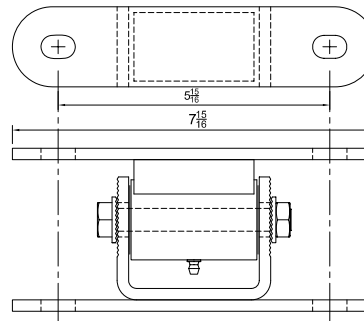
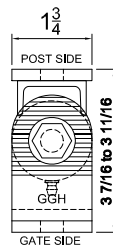
**3110.200** Adjustable Standard Hinge, Galvanized  
Rated for 1000 pounds (454 kgs) per pair

## Bolt to Gate – Bolt to Post

**3150.100** Adjustable Standard Hinge, Prime Coated

**3150.150** Adjustable Standard Hinge, Unfinished

**3150.200** Adjustable Standard Hinge, Galvanized  
Rated for 1000 pounds (454 kgs) per pair

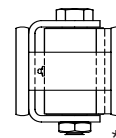
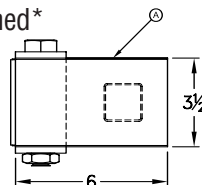


# Guardian UP-HILL Hinges

## 2190.100 GUARDIAN Heavy Duty Hinge – Uphill – Primed\*

Rated to 2,000 pounds (907 kgs) per pair

- Sold in pairs – Will allow gate to swing uphill
- Installation Instructions Provided

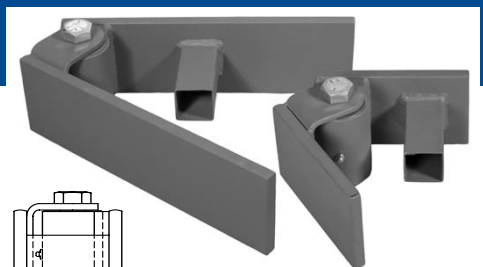
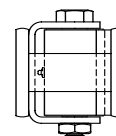
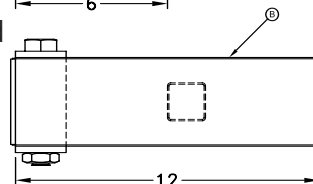


## 2195.100 GUARDIAN Standard Hinge – Uphill – Primed

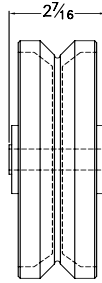
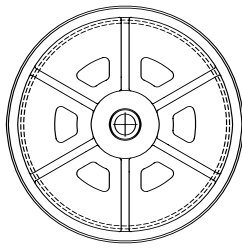
(Not Pictured)

Rated to 600 pounds (272 kgs) per pair

- Sold in pairs – Will allow gate to swing uphill
- Installation Instructions Provided



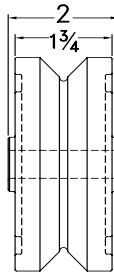
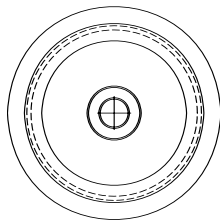
# Guardian WHEELS & WHEEL COVERS



**2205.400** 4" Steel 'V' Groove Wheel with Axle, Nut & Bolt  
(Use 2215.400 Wheel Cover)  
Rated to 400 lbs. (181 KG)

**2205.600** 6" Steel 'V' Groove Wheel with Axle, Nut & Bolt  
(Use 2215.600 Wheel Cover)  
Rated to 1000 lbs. (454 KG)

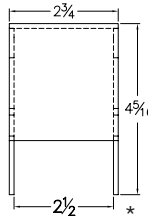
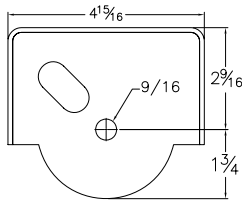
Not Recommended for Commercial or Industrial use



**2210.400** 4" Steel Precision 'V' Groove Wheel  
(Use 2220.400 Wheel Cover)  
Rated to 3000 lbs. (1361 KG)

**2210.600** 6" Steel Precision 'V' Groove Wheel  
(Use 2220.600, 2222.600 or  
2224.600 Wheel Cover)  
Rated to 5000 lbs. (2268 KG)

Recommended for Commercial or Industrial use

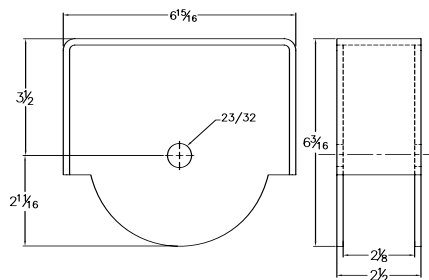
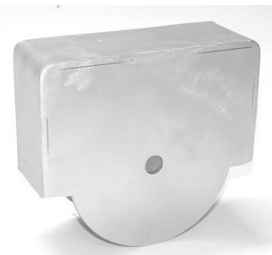


**2215.400** GUARDIAN 4" Steel Wheel Cover  
(For 'V' Groove Wheel 2205.400)\*

**2215.600** GUARDIAN 6" Steel Wheel Cover (Not Pictured)  
(For 'V' Groove Wheel 2005.600)

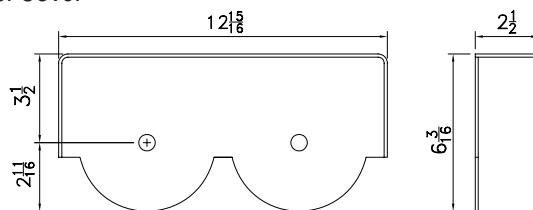
**2220.400** GUARDIAN 4" Steel Wheel Cover (Not Pictured)  
(For Precision 'V' Groove Wheel 2210.400)

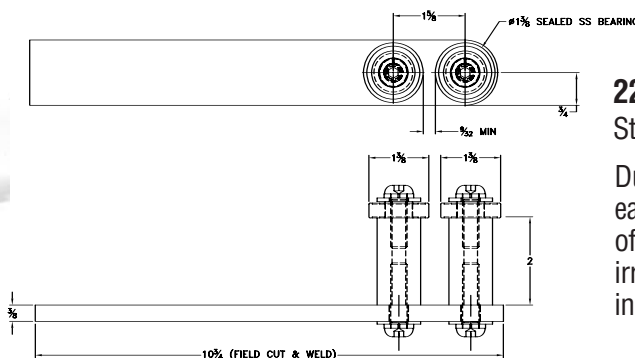
**2220.600** GUARDIAN 6" Steel Wheel Cover (Not Pictured)  
(For Precision 'V' Groove Wheel 2210.600)



**2222.600** GUARDIAN 6" Aluminum Wheel Cover  
(For Precision 'V' Groove Wheel 2210.600)

**2224.600** GUARDIAN 6" Trolley Dual Wheel Cover  
(For Precision 'V' Groove Wheel  
2210.600)





## 2230.100 GUARDIAN Steel Slide Gate Guide Roller Assembly

Durable and reliable Slide Gate Guide easy to install – excellent for all types of roll gates especially those with irregular designs - installation instructions provided



- 2240.020** GUARDIAN 2" Guide Roller
- 2240.040** GUARDIAN 4" Guide Roller
- 2240.060** GUARDIAN 6" Guide Roller
- 2240.090** GUARDIAN 9" Guide Roller
- 2240.120** GUARDIAN 12" Guide Roller

Manufactured to meet or exceed UL325 Requirements – Steel housing with commercial grade EPDM non-mar rubber roller – attractive self contained and easy to install system



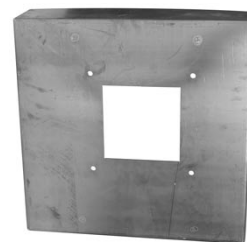
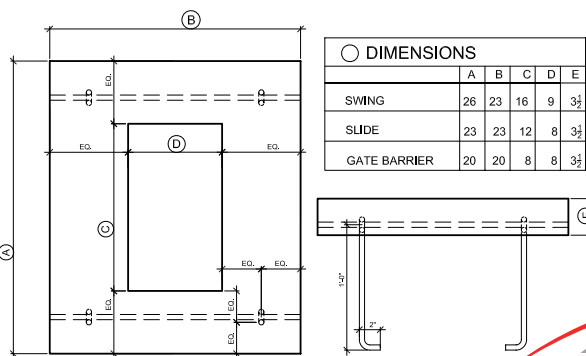
- 2242.040** GUARDIAN 4" Double Guide Roller for 2" Gate Frame
- 2242.060** GUARDIAN 6" Double Guide Roller for 2" Gate Frame
- 2242.090** GUARDIAN 9" Double Guide Roller for 2" Gate Frame
- 2242.120** GUARDIAN 12" Double Guide Roller for 2" Gate Frame
- 2243.040** GUARDIAN 4" Double Guide Roller for 2 1/2" Gate Frame
- 2243.060** GUARDIAN 6" Double Guide Roller for 2 1/2" Gate Frame
- 2243.090** GUARDIAN 9" Double Guide Roller for 2 1/2" Gate Frame
- 2243.120** GUARDIAN 12" Double Guide Roller for 2 1/2" Gate Frame

Manufactured to meet or exceed UL325 Requirements – Steel housing with commercial grade EPDM non-mar rubber roller – attractive self contained and easy to install system

## Guardian STEEL OPERATOR FORMS

- 2250.100** GUARDIAN Steel Operator Form Pad Universal Swing Gate Operator
- 2260.400** GUARDIAN Steel Operator Form Pad Universal Slide Gate Operator
- 2260.600** GUARDIAN Steel Operator Form Pad Universal Barrier Operator

Professionalize your Gate Operator installs with GUARDIAN Steel Forms – Creates a stable, durable and efficient system for operator install – Saves installation time and money by eliminating need to build forms – installation instructions provided



Guardian Gate Hardware reserves the right to change dimensions or specifications without notice.





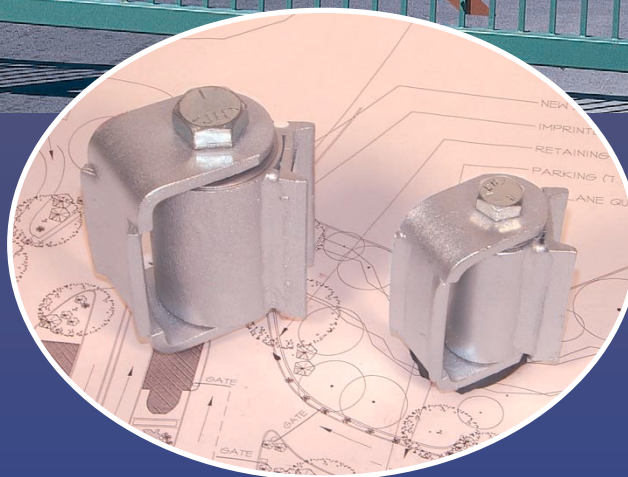


*"I've been a service tech 18 yrs and I've seen a lot of hinges. I tell my customers it's time for real hinges now. We go Guardian. My customers are amazed."*

*– David Saucedo  
Alpha Entry Systems  
Rio Grande Valley, Texas*



- **HINGES**
- **GORILLA HINGES**
- **ADJUSTABLE HINGES**
- **WHEEL & COVERS**
- **GUIDE ROLLERS**
- **ACCESSORIES**



4261 S. Country Club • Tucson, Arizona 85714-2009 USA

Tel: **1.520.881.1330** • Fax: **1.520.320.1820**

Toll Free: **1-800-213-9525**

[www.guardianhardware.com](http://www.guardianhardware.com) • [sales@guardianhardware.com](mailto:sales@guardianhardware.com)

