

# 1602 PARKING CONTROL



# BARRIER GATE OPERATOR



**automatic p.a.m.s.**  
sequencing with slide  
and swing gates



**wishbone**  
style aluminum arms up to 28  
feet in length and wood arms up  
to 20 feet in length



**foam padding**  
available for added protection



**fan/heater kits**  
options available for extreme  
weather conditions

- Designed to control wide traffic lanes (28 feet maximum) in limited use applications
- Suitable for low-cycle applications to restricted access areas such as prisons, airport security areas or industrial sites
- Electronic limit settings
- Rotates the arm 90° in approximately 5 seconds
- Three-piece aluminum arms available in 20, 24 and 28 foot lengths. Three-piece wood arm available in 20 foot length only
- 360 degree gear box rotation provides for smooth operation and even wear, increasing the life span of the operator
- Plug-in loop detectors simplify installation and wiring
- Up input memory buffer
- Down memory option

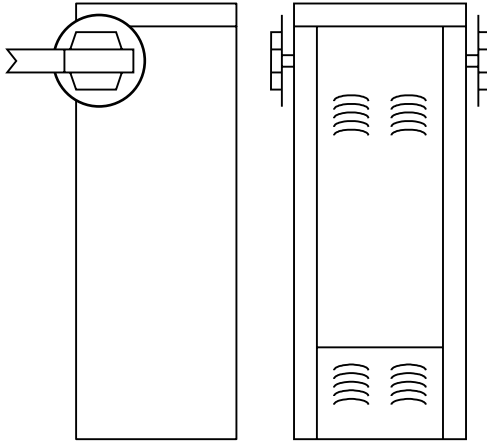
FEATURES

## ACCESS CONTROL SOLUTIONS





The model 1602 Barrier Gate Operators are designed for limited use applications such as industrial sites and loading dock areas. The 1602 is used to control wide traffic lanes (28 feet maximum) using a three-piece wishbone style arm. The heavy-duty harmonic arm linkage assures smooth and accurate arm travel of 90° in approximately 5 seconds.



**1602 1 HP**  
15" W x 38" H x 15" D  
38.1cm W x 96.5cm H x 38.1cm D

## 1602 Operator Specs

Class of operation	Max. arm length	Primary reduction	Speed	HP	Power	DC Convenience Open Package
III, IV	20' (6m) wood 28' (8.5m) aluminum	60:1	90° approx 5 sec	1HP	115 VAC, 60 Hz, 7.0A 230 VAC, 60 Hz, 3.5A** 460 VAC, 60 Hz, 1.8A**	Optional

\*\* These operators use a step-down transformer to achieve 115 VAC operating voltage

## General Specs

### Mechanical

Primary Reduction: 60:1  
worm gear running in a continuous oil bath

Speed: 90° rotation in approximately 5 sec

Housing: G90 galvanized steel painted white, rated NEMA 4x

### Release Method

fail-secure mechanical

### Loop Detectors

Port for plug-in open (up) detector  
Port for plug-in reverse (down) detector

### Arm Kits

Three-piece 3" round aluminum arm available in 20, 24 and 28 foot length.

Three-piece 1x3" kiln dried wood arm available in 20 foot length only.

All arm kits include counter-balance weights

### Standard Features

Electronic limits  
Auto-close timer 1-23 seconds  
P.A.M.S. (Perimeter Access Management System) sequence with a slide or swing gate operator  
Left / right mount  
360° gear box rotation before the motor changes direction. This provides for smooth operation, evens wear across the entire gear-box, and increases the life span of the operator

### Advanced Features

Up input memory buffer  
Down memory option  
Multiple up commands

### Options Available

Gate Tracker™ reporting output provides operator data to access control system (DKS 1833, 1835, 1837 or 1838 only)

Heater kit and/or fan kit

### Safety Standards

Complies with the UL 325 and UL 991 safety standards  
ETL listed

### Operating Temp

10°F to 140°F  
-12°C to 62°C  
Optional heater and fan kits available

### Shipping Weight

Approximately 160-180 lbs (72-81 kg)  
Arm kit: 45 lbs (20kg)

### Warranty

5-year factory warranty

Distributed by:

### DOOR KING, INC.

120 Glasgow Avenue, Inglewood, California 90301 U.S.A. Tel: 310-645-0023 FAX: 310-641-1586 www.doorking.com

© 2009 All Rights Reserved. Product specifications may change without notice. Rev. 7/09

### MEMBER:

